

BILL OF MATERIALS

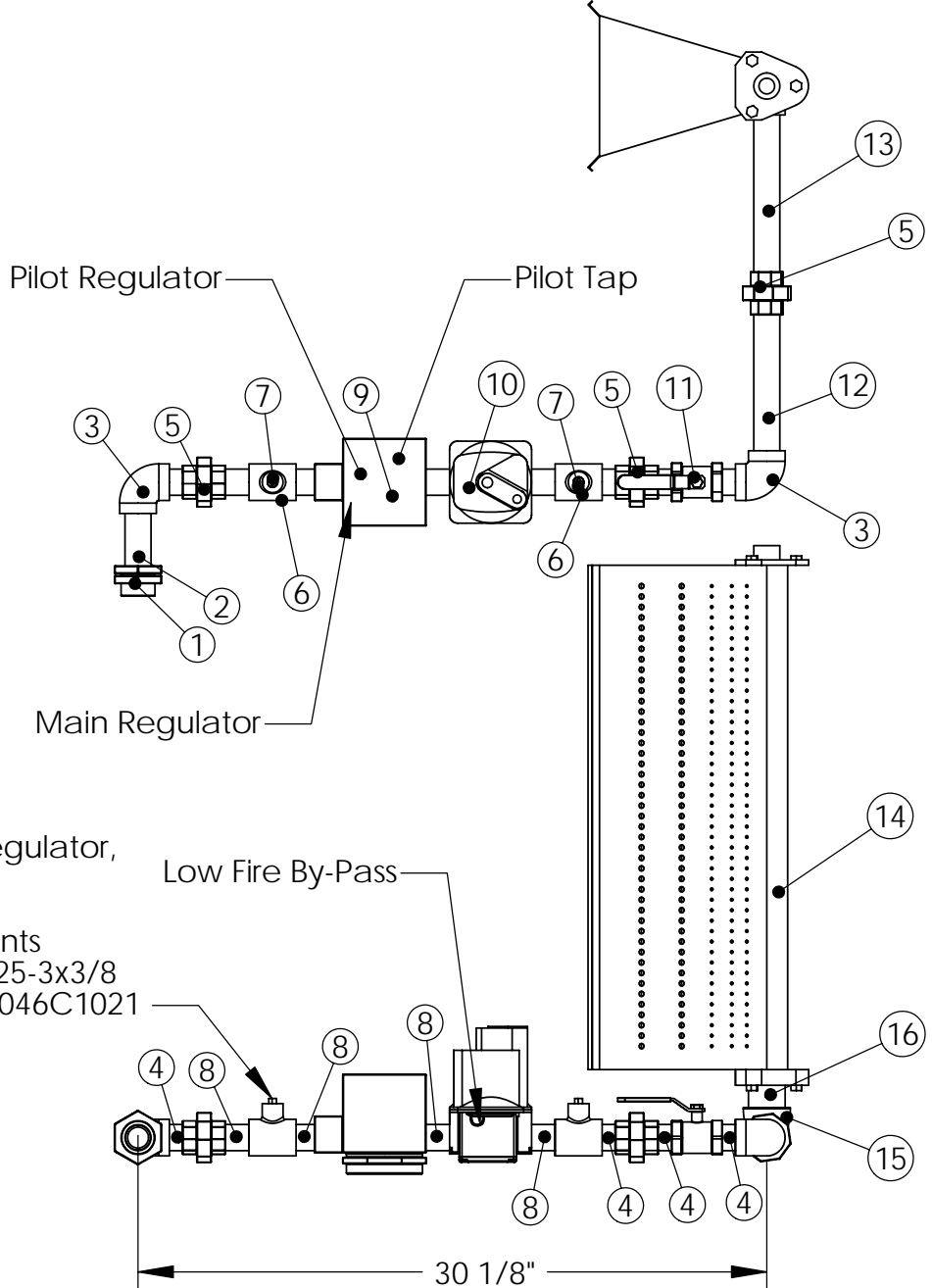
ITEM NUMBER	Description	Quantity
1	1" Quick Seal	1
2	1" x 3-1/2" Nipple	1
3	1" 90° Elbow	2
4	1" x Close Nipple (1-1/2")	4
5	1" Union	3
6	1" x 1" x 1/4" Tee	2
7	1/4" Square Head Pipe Plug	2
8	1" x 2" Nipple	4
9	Robertshaw 7000DERHC 1" Combonation Valve	1
10	Maxitrol M611 1" Modulating Valve	1
11	1" Manual Ball Valve	1
12	1" x 7" Nipple	1
13	1" x 8" Nipple	1
14	18" or 24" Midco Dual Fuel Burner	1
15	1-1/2" to 1" 90° Reducing Elbow	1
16	1-1/2" x Close Nipple (1-3/4")	1

NOTES:
 Gas Type: Natural or LP
 Inlet Pressure: 7 in. w.c. - 14 in. w.c.
 Max. Natural Gas Manifold Pressure: 5 in. w.c.
 Max. LP Manifold Pressure: 2.5 in. w.c.

External Ball Valve Shipped Loose in Control Cabinet

External High Gas Pressure Regulator Required when gas pressure exceeds 14 in. w.c.:
 P/N = 143-80-2-1-G-5/8 (10 psi. max.)

Pilot Solenoid, Regulator, & Manual Valve Location for MN State Requirements
 Regulator P/N: 325-3x3/8
 Solenoid P/N: V4046C1021

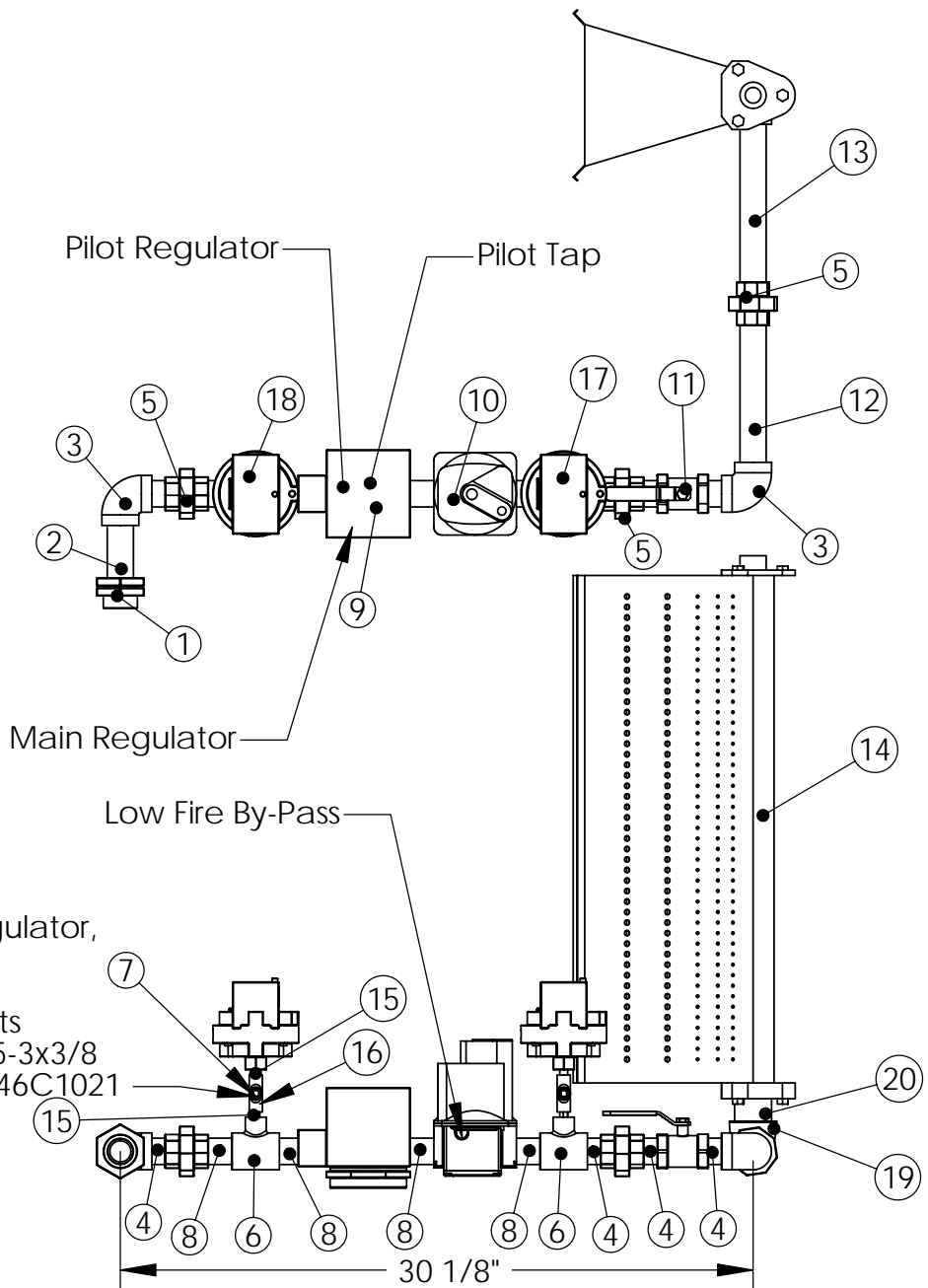


CONFIDENTIAL

<i>Material: N/A</i>		<i>Comments: N/A</i>		<i>Drawing Name: DF 3 Gas Train</i>		<i>Drawing Revision: 3</i>	
<i>Cutsizes: N/A x N/A</i>		<i>Job#: N/A</i>		<i>Part Number: N/A</i>		<i>Part Revision: N/A</i>	
<i>Quantity: 1</i>		<i>Configuration: Standard</i>		<i>Drawn By: BRH</i>		<i>Sheet: 1 of 2</i>	
				<i>Parent Assembly: DF 3</i>		<i>Weight: N/A lbs</i>	

BILL OF MATERIALS

ITEM NUMBER	Description	Quantity
1	1" Quick Seal	1
2	1" x 3-1/2" Nipple	1
3	1" 90° Elbow	2
4	1" Close Nipple (1-1/2")	4
5	1" Union	3
6	1" x 1" x 1/4" Tee	2
7	1/4" Square Head Pipe Plug	2
8	1" x 2" Nipple	4
9	Robertshaw 7000DERHC 1" Combonation Valve	1
10	Maxitrol M611 1" Modulating Valve	1
11	1" Manual Ball Valve	1
12	1" x 8" Nipple	1
13	1" x 6" Nipple	1
14	18" or 24" Midco Dual Fuel Burner	1
15	1/4" Close Nipple (1")	4
16	1/4" x 1/4" x 1/4" Tee	2
17	Optional Antunes HGP-A M1 Pressure Sw itch	1
18	Optional Antunes LGP-A M1 Pressure Sw itch	1
19	1" to 1-1/2" 90° Reducing Elbow	1
20	1-1/2" Close Nipple (1-3/4")	1



NOTES:
 Gas Type: Natural or LP
 Inlet Pressure: 7 in. w.c. - 14 in. w.c.
 Max. Natural Gas Manifold Pressure: 5 in. w.c.
 Max. LP Manifold Pressure: 2.5 in. w.c.

External Ball Valve Shipped Loose in Control Cabinet

External High Gas Pressure Regulator Required when gas pressure exceeds 14 in. w.c.:
 P/N = 143-80-2-1-G-5/8 (10 psi. max.)

Pilot Solenoid, Regulator, & Manual Valve Location for MN State Requirements
 Regulator P/N: 325-3x3/8
 Solenoid P/N: V4046C1021

CONFIDENTIAL

Drawing Name: DF 3 Gas Train		Drawing Revision: 3	
Part Number: N/A		Part Revision: N/A	
Drawn By: BRH		Sheet: 2 of 2	
Parent Assembly: DF 3		Weight: N/A lbs	

Material: N/A	Comments: N/A
Cutsizes: N/A x N/A	Job#: N/A
Quantity: 1	Configuration: Gas Pressure Switches